

Orchestra Score and Parts

Happy Heart

(Orchestra)



Brendan Elliget
MAGA 537
Theme 195-2010
(Revised 2020)

Copyright © 2010 BJE Music
belliget@hotmail.com
www.bjemusic.com

BJE 381

Happy Heart

(Orchestra)

Brendan Elliget
MAGA 537
Theme 194-2010
(Revised 2020)

A Moderato (WW only)

Musical score for the first system of 'Happy Heart' for orchestra. The score is in 4/4 time and B-flat major. It includes staves for Piccolo, Flutes 1-2, Oboe, Clarinet 1 in B-flat, Clarinet 2 in B-flat, Bassoon, Horn 1 in F, Horn 2 in F, Horn 3 in F, Trumpet 1 in B-flat, Trumpet 2 in B-flat, Trumpet 3 in B-flat, Trombone 1, Trombone 2, Trombone 3, Tuba, Timpani, Drum Set, and Glockenspiel. The Flutes 1-2 and Oboe parts begin with a *mf* dynamic. The Bassoon part also begins with a *mf* dynamic. The Horn 1 in F part has a *Solo* marking and a *mf* dynamic. The Glockenspiel part begins with a *f* dynamic.

A Moderato (WW only)

Musical score for the second system of 'Happy Heart' for orchestra. This system includes staves for Violin 1, Violin 2, Viola, Violoncello, and Double Bass. All parts in this system are currently blank.

This page of a musical score, labeled '2', contains measures 9 through 16. The score is for an orchestra and includes parts for Piccolo (Picc.), Flutes 1 and 2 (Fls. 1-2), Oboe (Ob.), Clarinets 1 and 2 (Cl1, Cl2), Bassoon (Bsn.), Horns 1, 2, and 3 (Hn. 1, Hn. 2, Hn. 3), Trumpets 1, 2, and 3 (Tpt. 1, Tpt. 2, Tpt. 3), Trombones 1, 2, and 3 (Tbn. 1, Tbn. 2, Tbn. 3), Tuba (Tba.), Timpani (Timp.), Drums (Dr.), Glockenspiel (Glock.), Violins 1 and 2 (Vln. 1, Vln. 2), Viola (Vla.), Violoncello (Vc.), and Double Bass (Db.). The music is in a key signature of one flat (B-flat major or D minor) and a 4/4 time signature. The score begins at measure 9 with a piccolo rest and flute/oboe entries. The woodwinds and strings play various rhythmic patterns, including eighth and sixteenth notes. The brass instruments are mostly silent, with some activity in the tuba and timpani towards the end of the page. The score concludes at measure 16 with a double bar line and repeat signs.

B

Musical score for the first system of instruments. The score includes parts for Piccolo, Flutes 1-2, Oboe, Clarinets 1-2, Bassoon, Horns 1-3, Trumpets 1-3, Trombones 1-3, Tuba, and Timpani. The key signature is B-flat major (two flats). The Piccolo, Flutes 1-2, and Oboe parts begin with a *mf* dynamic. The Horn 1 part has a *Solo* marking and a *f* dynamic. The Trumpet 1 part also has a *Solo* marking. The Timpani part begins with a *mf* dynamic. The rest of the instruments are marked with a rest.

B

Musical score for the second system of instruments. The score includes parts for Violin 1, Violin 2, Viola, Violoncello, and Double Bass. The key signature is B-flat major (two flats). The Violin 1, Violin 2, Viola, and Violoncello parts begin with a *mf* dynamic. The Viola part has a *Div.* marking. The Double Bass part begins with a *mf* dynamic.

26

Picc.

Fls. 1-2

Ob.

Cl1

Cl2

Bsn.

Hn.1

Hn.2

Hn.3

Tpt.1

Tpt.2

Tpt.3

Tbn.1

Tbn.2

Tbn.3

Tba.

Timp.

Dr.

Glock.

Vln. 1

Vln. 2

Vla.

Vc.

Db.

All play

ff

f

mf

Div.

35 **C**

Picc. *f*

Fls. 1-2 *f*

Ob.

Cl1

Cl2

Bsn.

Hn.1 *mf* *a3(unis.)*

Hn.2 *mf* *a3(unis.)*

Hn.3 *mf* *a3(unis.)*

Tpt.1 *mf* *All Play (unis.)*

Tpt.2 *mf*

Tpt.3 *mf*

Tbn.1 *mf*

Tbn.2 *mf*

Tbn.3 *mf*

Tba. *mf*

Timp.

Dr. *mf*

Glock.

Vln. 1 *mf*

Vln. 2 *mf*

Vla. *mf* *Div.*

Vc. *mf*

Db. *mf*

The image shows a page of an orchestral score for 'Happy Heart'. It features 25 staves for various instruments: Piccolo, Flutes 1-2, Oboe, Clarinets 1-2, Bassoon, Horns 1-3, Trumpets 1-3, Trombones 1-3, Tuba, Timpani, Drums, Glockenspiel, Violins 1-2, Viola, Violoncello, and Double Bass. The score is in 2/4 time with a key signature of two flats (B-flat and E-flat). A rehearsal mark 'C' is placed at the beginning of the first staff. Dynamics include *f* (forte) and *mf* (mezzo-forte). Performance instructions include 'All Play (unis.)' for the trumpets and 'Div.' (divisi) for the violas. The page number '5' is in the top right corner.

43

Picc.

Fls. 1-2

Ob.

Cl1

Cl2

Bsn.

Hn.1

Hn.2

Hn.3

Tpt.1

Tpt.2

Tpt.3

Tbn.1

Tbn.2

Tbn.3

Tba.

Timp.

Dr.

Glock.

Vln. 1

Vln. 2

Vla.

Vc.

Db.

Happy Heart

(Orchestra)

A Moderato (WW only)

Musical notation for section A, measures 1-11. The music is in 4/4 time with a key signature of two flats. It begins with a *mf* dynamic. The first staff contains measures 1-6, and the second staff contains measures 7-11. The melody features eighth-note patterns and rests.

B

Musical notation for section B, measures 12-28. The music continues with a *mf* dynamic. The first staff contains measures 12-17, and the second staff contains measures 18-28. The melody features eighth-note patterns and rests.

C

Musical notation for section C, measures 29-45. The music continues with a *f* dynamic. The first staff contains measures 29-34, and the second staff contains measures 35-45. The melody features eighth-note patterns and rests.

D

Musical notation for section D, measures 46-63. The music continues with a *f* dynamic. The first staff contains measures 46-51, and the second staff contains measures 52-63. The melody features eighth-note patterns and rests.

Rall.

Molto Rall.

Happy Heart

(Orchestra)

A Moderato (WW only)

8

13

18 **B**

25

30

35 **C**

42

47

52 **D**

58

64 **Rall.** **Molto Rall.**

Happy Heart

(Orchestra)

Brendan Elliget
MAGA 537
Theme 194-2010
(Revised 2020)

A Moderato (WW only)

1

mf

8

15

B

22

29

35

C

1

f

42

49

D

56

64

Rall.

Molto Rall.

Happy Heart

(Orchestra)

A Moderato (WW only)

7 *Solo*
mf

12

18 **B** *Solo*
f

2

27

34 *All play* **C** *a3(unis.)*
mf

42

49 **D**
f

57

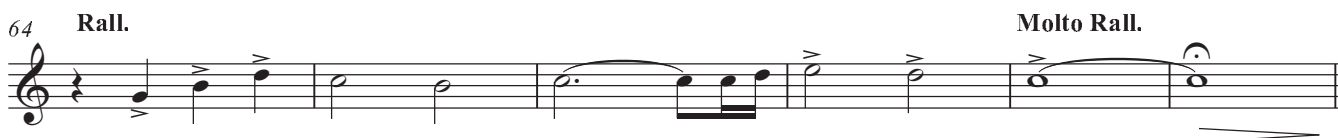
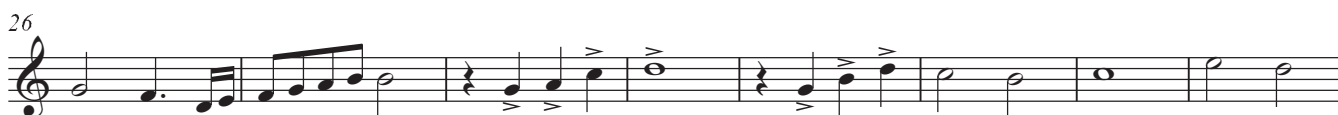
64 *Rall.* *Molto Rall.*

Happy Heart

(Orchestra)

A Moderato (WW only)

17



Happy Heart

(Orchestra)

A Moderato (WW only)

Musical staff for section A, measures 1-16. The staff is in bass clef with a 4/4 time signature. It consists of a solid black bar with the number 17 above it, followed by a double bar line, another solid black bar with the number 16 above it, and a final measure with a quarter rest, a quarter note, and a half note. A hairpin ending is present at the end of the staff.

35 **C**

Musical staff for section C, measures 35-42. The staff is in bass clef with a 4/4 time signature. It begins with a quarter rest, followed by a series of eighth and quarter notes. A dynamic marking of *mf* is placed below the first measure. The staff ends with a hairpin ending.

43

Musical staff for section C continuation, measures 43-50. The staff is in bass clef with a 4/4 time signature. It continues the melodic line from the previous staff with various rhythmic patterns including eighth and quarter notes.

51 **D**

Musical staff for section D, measures 51-57. The staff is in bass clef with a 4/4 time signature. It begins with a quarter rest, followed by a series of quarter notes. A dynamic marking of *f* is placed below the first measure. The staff ends with a hairpin ending.

58

Musical staff for section D continuation, measures 58-63. The staff is in bass clef with a 4/4 time signature. It continues the melodic line with eighth and quarter notes.

64 **Rall.** **Molto Rall.**

Musical staff for section D continuation, measures 64-70. The staff is in bass clef with a 4/4 time signature. It begins with a quarter rest, followed by a series of quarter notes. The tempo markings **Rall.** and **Molto Rall.** are placed above the staff. The staff ends with a hairpin ending.

Happy Heart

(Orchestra)

A Moderato (WW only)

16 **B**

21

27

34 **C**

41

46

52 **D**

58

64 **Rall.** **Molto Rall.**