

SAXOPHONE QUARTET or GROUP
Score and Parts

AULD LANG SYNE

(SAXOPHONE QUARTET or Group) [Key of F]



Traditional Arranged By
Brendan Elliget MAGA 537

Copyright © 2012 BJE Music
belliget@hotmail.com
www.bjemusic.com

BJE 374

AULD LANG SYNE

(SAXOPHONE QUARTET OR GROUP)

Traditional
Arranged by
Brendan Elliget
MAGA 537

Introduction

Musical score for the Introduction of 'Auld Lang Syne' for saxophone quartet. The score is in 4/4 time with a key signature of one sharp (F#). It features five staves: Soprano Saxophone (Part 1), Alto Saxophone 1 (Part 1), Alto Saxophone 2 (Part 2), Tenor Saxophone (Part 3), and Baritone Saxophone (Part 4). The dynamics are marked *mf* (mezzo-forte) for all parts. The introduction consists of four measures.

Musical score for the main body of 'Auld Lang Syne' for saxophone quartet. The score is in 4/4 time with a key signature of one sharp (F#). It features five staves: Sop. Sax., Alto Sax. 1, Alto Sax. 2, Ten. Sax., and Bari. Sax. The dynamics are marked *mf* (mezzo-forte) for all parts. The section begins at measure 4, indicated by a box labeled 'A' above the first staff. The main body consists of four measures.

Saxophone Quartet or Group

B

8

Sop. Sax.
Alto Sax.1
Alto Sax.2
Ten. Sax.
Bari. Sax.

C

12

Sop. Sax.
Alto Sax.1
Alto Sax.2
Ten. Sax.
Bari. Sax.

D

16

Sop. Sax.
Alto Sax.1
Alto Sax.2
Ten. Sax.
Bari. Sax.

E *2nd Time poco a poco accel.*

20

Sop. Sax.
Alto Sax.1
Alto Sax.2
Ten. Sax.
Bari. Sax.

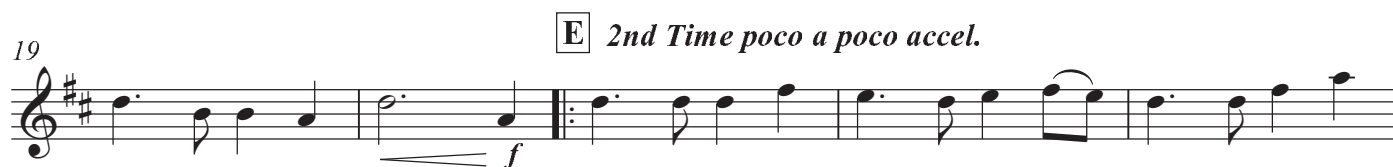
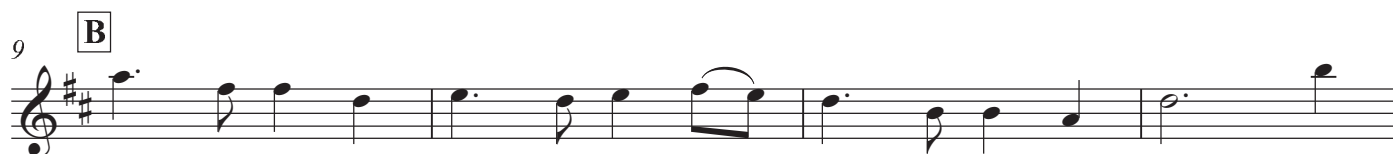
AULD LANG SYNE

(SAXOPHONE QUARTET OR GROUP)

Traditional
Arranged by
Brendan Elliget
MAGA 537

Alto Saxophone 1 (Part 1)

Introduction



Tenor Saxophone (Part 3) **AULD LANG SYNE**
(SAXOPHONE QUARTET OR GROUP)

Traditional
Arranged by
Brendan Elliget
MAGA 537

Introduction

Musical notation for the introduction, starting with a treble clef, key signature of one sharp (F#), and 4/4 time signature. The melody begins with a half note G4, followed by quarter notes A4, B4, and C5. A slur covers the next four notes: D5, E5, F#5, and G5. The melody continues with quarter notes G5, F#5, E5, and D5, followed by a half note C5. The piece concludes with a half note G4. The dynamic marking *mf* is present at the beginning and end.

5 **A**

Musical notation for section A, starting with a treble clef, key signature of one sharp (F#), and 4/4 time signature. The melody consists of quarter notes G4, A4, B4, and C5, followed by quarter notes D5, E5, F#5, and G5. The section ends with a half note G4.

9 **B** **C**

Musical notation for sections B and C. Section B (measures 9-13) consists of quarter notes G4, A4, B4, and C5, followed by quarter notes D5, E5, F#5, and G5. Section C (measures 13-14) consists of quarter notes G4, A4, B4, and C5, followed by quarter notes D5, E5, F#5, and G5.

14 **D**

Musical notation for section D, starting with a treble clef, key signature of one sharp (F#), and 4/4 time signature. The melody consists of quarter notes G4, A4, B4, and C5, followed by quarter notes D5, E5, F#5, and G5. The section ends with a half note G4.

19 **E** *2nd Time poco a poco accel.*

Musical notation for section E, starting with a treble clef, key signature of one sharp (F#), and 4/4 time signature. The melody consists of quarter notes G4, A4, B4, and C5, followed by quarter notes D5, E5, F#5, and G5. A first ending bracket covers the final two notes (F#5 and G5). The dynamic marking *f* is present at the start of the first ending.

25 **F**

Musical notation for section F, starting with a treble clef, key signature of one sharp (F#), and 4/4 time signature. The melody consists of quarter notes G4, A4, B4, and C5, followed by quarter notes D5, E5, F#5, and G5. The section ends with a half note G4.

29 **G** *2nd Time Molto Rall.*

Musical notation for section G, starting with a treble clef, key signature of one sharp (F#), and 4/4 time signature. The melody consists of quarter notes G4, A4, B4, and C5, followed by quarter notes D5, E5, F#5, and G5. The section ends with a half note G4.

33 **H**

Musical notation for section H, starting with a treble clef, key signature of one sharp (F#), and 4/4 time signature. The melody consists of quarter notes G4, A4, B4, and C5, followed by quarter notes D5, E5, F#5, and G5. The section ends with a half note G4. A first ending bracket covers the final two notes (F#5 and G5). The dynamic marking *f* is present at the start of the first ending. The first ending is marked "1. (Accel. on repeat)" and the second ending is marked "2. FINE".