

SATB Choir and Orchestra  
(Optional Piano Part)

# GWAHODDIAD

(I Hear Thy Welcome Voice)  
- Orchestra -



**Welsh Traditional:**  
**WELCOME VOICE**  
Arranged by Brendan Elliget  
MAGA 537

**Copyright 2010 © BJE Music**  
belliget@hotmail.com  
www.bjemusic.com  
(Revised 2017)

**BJE 214**

# GWAHODDIAD

(I Hear Thy Welcome Voice)

Welsh Traditional:  
WELCOME VOICE  
Arranged by Brendan Elliget  
MAGA 537

Moderato

♩ = 80

3



*mf*

**B** Chorus



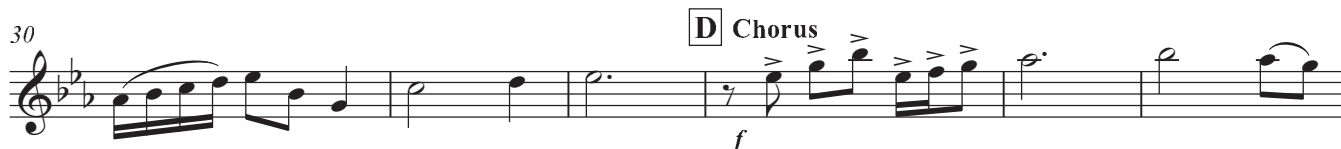
**A** Verse 1

*f*



**C** Verse 2 and 3

*mf*



**D** Chorus

*f*



**E** Verse 4

*f*



Choir Only

**G** (Chorus Repeat)

**H**



Choir cue.

*f*



Rall.

Molto Rall.

*ff*

# GWAHODDIAD

(I Hear Thy Welcome Voice)

Welsh Traditional:  
WELCOME VOICE  
Arranged by Brendan Elliget  
MAGA 537

Moderato

♩ = 80

4 A Verse 1 8

15 B Chorus

21 C Verse 2 and 3

30 D Chorus

39 1. 2.

44 E Verse 4

52 F 1

60 G Choir Only (Chorus Repeat) H

66 Rall. Molto Rall. Div. ff

# GWAHODDIAD

(I Hear Thy Welcome Voice)

Welsh Traditional:  
WELCOME VOICE  
Arranged by Brendan Elliget  
MAGA 537

Moderato  
♩ = 80

4 A Verse 1 8

15 C Verse 2 and 3 8

**B** Chorus

33

**D** Chorus

39

44 F

**E** Verse 4 8

57

**G** Choir Only  
(Chorus Repeat)  
Choir cue.

62 H

**H**

Rall. Molto Rall.

Piano

# GWAHODDIAD

(I Hear Thy Welcome Voice)

Welsh Traditional:  
**WELCOME VOICE**  
Arranged by Brendan Elliget  
MAGA 537

Moderato

♩ = 80

Chord progression: Eb/G, Eb/Bb, Cm, Eb, Fm/Ab, Gm/Bb, Eb

Dynamic: *mf*

Time signature: 3/4

Key signature: Bb

**A** Verse 1

Chord progression: Fm/Ab, Gm/Bb, Eb, Eb, Bb7, Eb, Eb/G, Ab6, Bb(add9)

Chord progression: Eb, Eb/G, Cm/Eb, Ab, Eb, Fm/Ab, Gm/Bb, Eb

**B** Chorus

Chord progression: Eb, Cm/Eb, Ab, Gm, F/C, Bb, Bb/Ab, Eb/G, Eb/Bb, Cm, Eb

Copyright © 2010 BJE Music  
belliget@hotmail.com  
www.bjemusic.com

GWAHODDIAD - SATB Choir and Orchestra

# GWAHODDIAD

(I Hear Thy Welcome Voice)

Welsh Traditional:  
WELCOME VOICE  
Arranged by Brendan Elliget  
MAGA 537

Moderato  
♩ = 80

6 **A** Verse 1

12 **B** Chorus

19

24 **C** Verse 2 and 3  
*Play 2nd Time only*

31 **D** Chorus  
*Play both Times*

39

43 **E** Verse 4

51 **F**

60 **G** (Chorus Repeat) **H**

66 Rall. **I** Molto Rall.

# GWAHODDIAD

(I Hear Thy Welcome Voice)

Welsh Traditional:  
WELCOME VOICE  
Arranged by Brendan Elliget  
MAGA 537

Moderato  
♩ = 80

Soprano  
Alto  
Tenor  
Bass

Piano

**A** Verse 1

**B** Chorus

S.  
A.  
T.  
B.

hear Thy wel-come voice That calls me, Lord to Thee, For clean - sing in Thy prec-ious blood That flowed on Cal - va - ry. I am co-ming

Pno.

16

S.  
A.  
T.  
B.

Lord! Co - ming now to Thee! Wash me, cleanse me in the blood that flowed on Cal - va - ry! 2. Tho'.

Pno.



**A Verse 1** **B Chorus**

Picc.  
Fl.  
Ob.  
Cl.1  
Cl.2  
Bsn.  
Hn.1  
Hn.2-3  
Tpt.1  
Tpt.2  
Tpt.3  
Tbn.1  
Tbn.2  
Tbn.3  
Tba.  
Timp.

S.  
A.  
T.  
B.

hear Thy wel-come voice That calls me, Lord to Thee. For clean-sing in Thy prec-ious blood That flowed on Cal-va-ry. I am co-ming

hear Thy wel-come voice That calls me, Lord to Thee. For clean-sing in Thy prec-ious blood That flowed on Cal-va-ry. I am co-ming

hear Thy wel-come voice That calls me, Lord to Thee. For clean-sing in Thy prec-ious blood That flowed on Cal-va-ry. I am co-ming

hear Thy wel-come voice That calls me, Lord to Thee. For clean-sing in Thy prec-ious blood That flowed on Cal-va-ry. I am co-ming

E<sup>b</sup> B<sup>b7</sup> E<sup>b</sup> E<sup>b</sup>/G A<sup>b6</sup> B<sup>b</sup>(add<sup>9</sup>) E<sup>b</sup> E<sup>b</sup>/G C<sup>m</sup>/E<sup>b</sup> A<sup>b</sup> E<sup>b</sup> F<sup>m</sup>/A<sup>b</sup> G<sup>m</sup>/B<sup>b</sup> E<sup>b</sup> E<sup>b</sup> C<sup>m</sup>/E<sup>b</sup>

Pno.

**A Verse 1** **B Chorus**

Vln. 1  
Vln. 2  
Vla.  
Vc.  
Db.



**C** Verse 2 and 3

**D** Chorus

Picc. *mf*

Fl. *mf*

Ob. *mf*

Cl.1 *mf*

Cl.2 *mf*

Bsn. *mf*

Hn.1 *Hrn 1 cue*

Hn.2-3 *mf*

Tpt.1 *Play 2nd Time only* *f*

Tpt.2 *Play 2nd Time only* *f*

Tpt.3 *Play 2nd Time only* *f*

Tbn.1 *mf*

Tbn.2 *mf*

Tbn.3 *mf*

Tba. *mf*

Timp. *mf*

S. *mf*  
com - ing weak and vile. Thou dost my strength as - sure; Thou dost my vil - ness ful - ly cleanse. Till spot - less all, and pure. I am co - ming Lord!  
Je - sus calls me on To per - fect faith and love. To per - fect hope and peace and trust. For earth and heav'n a - bove.

A. *mf*  
com - ing weak and vile. Thou dost my strength as - sure; Thou dost my vil - ness ful - ly cleanse. Till spot - less all, and pure. I am co - ming Lord!  
Je - sus calls me on To per - fect faith and love. To per - fect hope and peace and trust. For earth and heav'n a - bove.

T. *mf*  
com - ing weak and vile. Thou dost my strength as - sure; Thou dost my vil - ness ful - ly cleanse. Till spot - less all, and pure. I am co - ming Lord!  
Je - sus calls me on To per - fect faith and love. To per - fect hope and peace and trust. For earth and heav'n a - bove.

B. *mf*  
com - ing weak and vile. Thou dost my strength as - sure; Thou dost my vil - ness ful - ly cleanse. Till spot - less all, and pure. I am co - ming Lord!  
Je - sus calls me on To per - fect faith and love. To per - fect hope and peace and trust. For earth and heav'n a - bove.

Pno. *mf*

**C** Verse 2 and 3

**D** Chorus  
*Play both Times*

Vln. 1 *mf*  
*Play 2nd Time only*

Vln. 2 *mf*  
*Play 2nd Time only*

Vla. *mf*  
*Play 2nd Time only*

Vc. *mf*  
*Play 2nd Time only*

Db. *mf*  
*Play 2nd Time only*