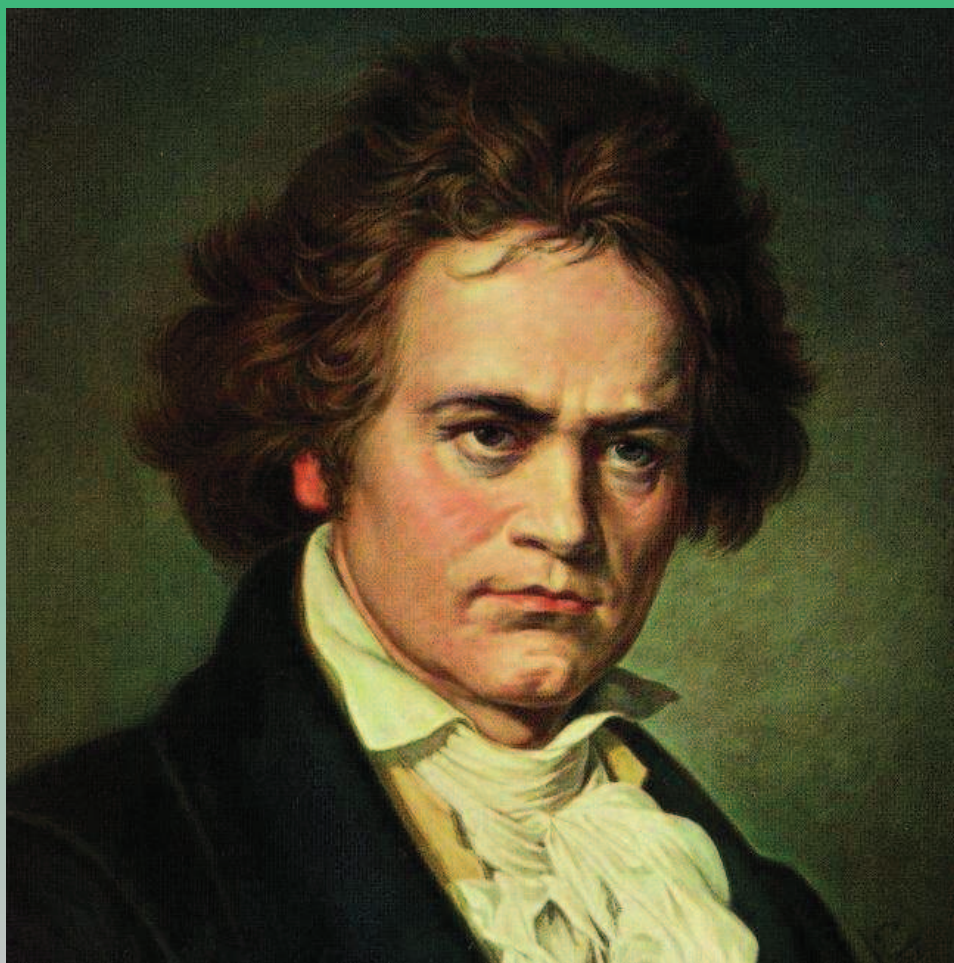


CONCERT BAND—SCORE and Parts
(with optional String and Piano Parts)

ODE TO JOY

(Song of Joy)



Adapted from
Beethoven's 9th Symphony
Arranged by Brendan Elliget
MAGA 537

Copyright © 2006 BJE Music
belliget@hotmail.com
www.bjemusic.com

ODE TO JOY

(Song of Joy)

Adapted from
Beethoven's 9th Symphony
Arranged by Brendan Elliget
MAGA 537

♩ = 112 (Introduction)

f

5 **5** (Verses)

mf

9 **9**

13 **13** *2nd Time Only*

f

16 *Play both times* **17**

19

1. 2. *For Extra Verses Back to 5 - D.S.*

ODE TO JOY

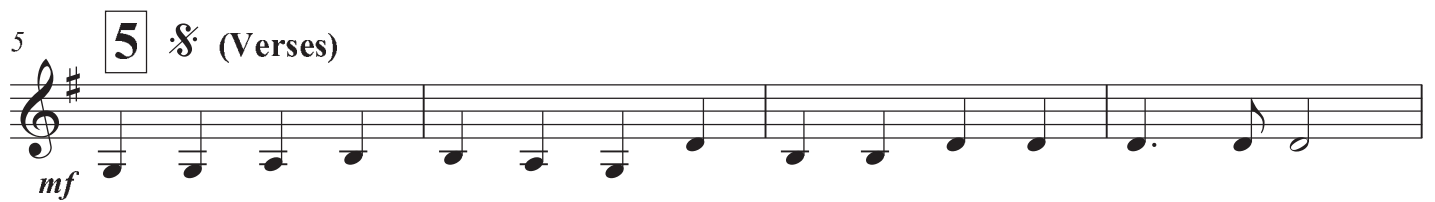
(Song of Joy)

Adapted from
Beethoven's 9th Symphony
Arranged by Brendan Elliget
MAGA 537

$\text{♩} = 112$ (Introduction)



5 **5** ♩ (Verses)



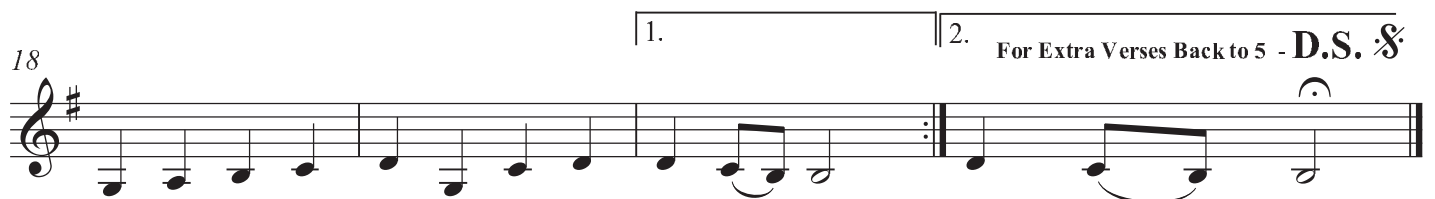
9 **9**



13 **13** **17**



18 1. 2. For Extra Verses Back to 5 - **D.S.** ♩



ODE TO JOY

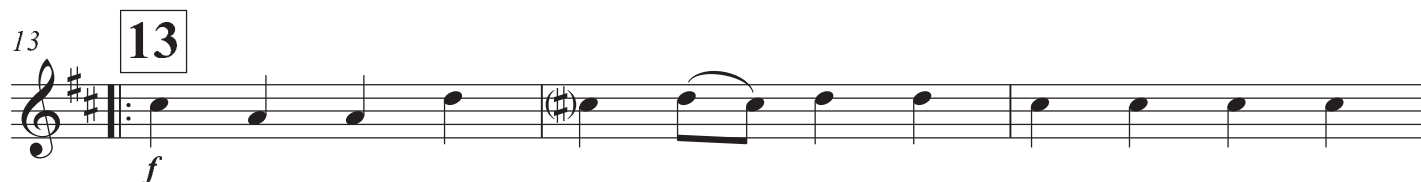
(Song of Joy)

Adapted from
Beethoven's 9th Symphony
Arranged by Brendan Elliget
MAGA 537

♩ = 112 (Introduction)



5 ♩ (Verses)



ODE TO JOY

(Song of Joy)

Adapted from
Beethoven's 9th Symphony
Arranged by Brendan Elliget
MAGA 537

♩ = 112 (Introduction)

f

5 **5** (Verses)

mf

9 **9**

mf

13 **13** 2nd Time Only

f

17 **17** Play Both Times

f

1. 2. For Extra Verses Back to 5 - **D.S.**

Piano

ODE TO JOY

(Song of Joy)

Adapted from
Beethoven's 9th Symphony
Arranged by Brendan Elliget
MAGA 537

♩ = 112 (Introduction)

F B^b F⁷ Cm¹¹ Gm C¹³ Gm F E^o F C C⁷ F

f

5 (Verses)

5 F Gm¹¹ F F C⁷ F C F C¹¹ F F C

mf

9

9 F Gm¹¹ F F C⁷ F C⁷ F C F C F

13

13 C F C⁷ F/C C⁷ Am A A⁷

16 Dm G⁷ C

17

F B^b F⁷ Cm¹¹ Gm C¹³ Gm

1.

2.

For Extra Verses Back to 5 - **D.S.**

19 F E^o F C C⁷ F C C⁷ F

ODE TO JOY

(Song of Joy)

Adapted from
Beethoven's 9th Symphony
Arranged by Brendan Elliget
MAGA 537

♩ = 112 (Introduction)

Musical notation for the introduction of Ode to Joy, measures 1-4. The music is in 4/4 time, starting with a treble clef and a key signature of one flat (B-flat). The notes are G2, A2, B2, C3, D3, E3, F3, G3, A3, B3, C4, D4, E4, F4, G4, A4, B4, C5. The dynamics are marked *f* (forte).

5 **5** (Verses)

Musical notation for the first verse of Ode to Joy, measures 5-8. The music is in 4/4 time, starting with a treble clef and a key signature of one flat (B-flat). The notes are G2, A2, B2, C3, D3, E3, F3, G3, A3, B3, C4, D4, E4, F4, G4, A4, B4, C5. The dynamics are marked *mf* (mezzo-forte).

9 **9**

Musical notation for the second verse of Ode to Joy, measures 9-12. The music is in 4/4 time, starting with a treble clef and a key signature of one flat (B-flat). The notes are G2, A2, B2, C3, D3, E3, F3, G3, A3, B3, C4, D4, E4, F4, G4, A4, B4, C5. The dynamics are marked *mf* (mezzo-forte).

13 **13**

Musical notation for the third verse of Ode to Joy, measures 13-16. The music is in 4/4 time, starting with a treble clef and a key signature of one flat (B-flat). The notes are G2, A2, B2, C3, D3, E3, F3, G3, A3, B3, C4, D4, E4, F4, G4, A4, B4, C5. The dynamics are marked *f* (forte).

17

Musical notation for the fourth verse of Ode to Joy, measures 17-19. The music is in 4/4 time, starting with a treble clef and a key signature of one flat (B-flat). The notes are G2, A2, B2, C3, D3, E3, F3, G3, A3, B3, C4, D4, E4, F4, G4, A4, B4, C5. The dynamics are marked *f* (forte).

Musical notation for the fifth verse of Ode to Joy, measures 20-22. The music is in 4/4 time, starting with a treble clef and a key signature of one flat (B-flat). The notes are G2, A2, B2, C3, D3, E3, F3, G3, A3, B3, C4, D4, E4, F4, G4, A4, B4, C5. The dynamics are marked *f* (forte). The notation includes first and second endings: 1. and 2. For Extra Verses Back to 5 - D.S. rit .

ODE TO JOY

(Song of Joy)

Adapted from
Beethoven's 9th Symphony
Arranged by Brendan Elliget
MAGA 537

$\text{♩} = 112$ (Introduction) 5 ♩ (Verses) 9

Piccolo *f* *mf*

Flute *f* *mf*

Oboe *f* *mf*

1st Clarinet in B \flat *f* *mf*

2nd Clarinet in B \flat *f* *mf*

3rd Clarinet in B \flat *f* *mf*

Bass Clarinet in B \flat *f* *mf*

1st Alto Saxophone *f* *mf*

2nd Alto Saxophone *f* *mf*

Tenor Saxophone *f* *mf*

Baritone Saxophone *f* *mf*

Bassoon *f* *mf*

Piano *f* *mf*

1st Horn in F *f* *mf*

2nd Horn in F *f* *mf*

1st Trumpet in B \flat *f* *mf*

2nd Trumpet in B \flat *f* *mf*

3rd Trumpet in B \flat *f* *mf*

1st Trombone *f* *mf*

2nd Trombone *f* *mf*

Baritone *f* *mf*

Tuba *f* *mf*

String Bass *f* *mf*

Glockenspiel *f* *mf*

Timpani *f* *mf*

Drums Set *f* *mf*

Chord symbols: F, B \flat F7, Cm¹¹ Gm, C¹³ Gm, F, E $^{\circ}$ F, C C⁷, F, F, Gm¹¹ F, F, C⁷, F, C, F, C¹¹, F, F, C, F, Gm¹¹ F

